

Corrosion-Resistant Compression Load Cells

Stainless Steel

LC-J Made to order

5 to 200 kN

Corrosion-Resistant

Hermetically Sealed Structure with Inert Gas Filled in

Safe Overload Rating as High as 400%



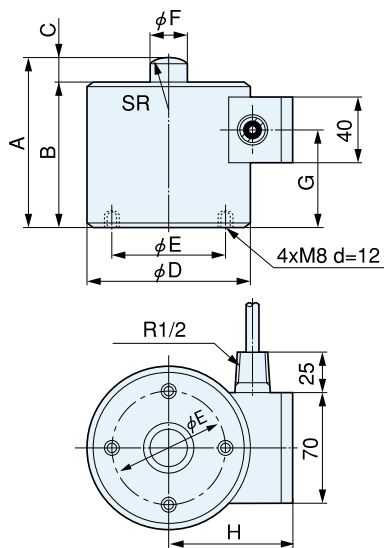
- TEDS-installed versions can be manufactured. Inquiries are welcome.

The hermetically-sealed structure with inert gas filled in makes load cells in the LC-J series applicable for measurement in food processing or where they are exposed to strongly corrosive liquids or gases. Their high overload rating minimizes a chance of breaking down due to overload.

Specifications

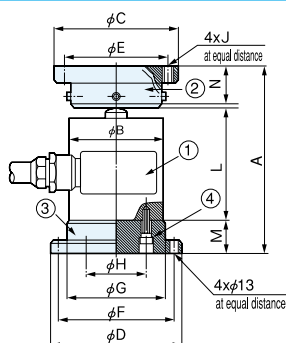
Performance	
Rated Capacity	See table below.
Nonlinearity	Within $\pm 0.5\%$ RO
Hysteresis	Within $\pm 0.5\%$ RO
Repeatability	0.1% RO or less
Rated Output	1 mV/V (2000 $\mu\text{m/m}$) $\pm 0.2\%$
Environmental Capability	
Safe Temp. Range	-35 to 80°C
Comp. Temp. Range	-10 to 70°C
Temp. Effect on Zero Bal.	Within $\pm 0.005\%$ RO/ $^{\circ}\text{C}$
Temp. Effect on Out.	Within $\pm 0.005\%$ / $^{\circ}\text{C}$
Electrical Characteristics	
Safe Excit. Voltage	20 V AC or DC
Recom. Excit. Voltage	1 to 12 V AC or DC
Input Resistance	$350\ \Omega \pm 0.5\%$
Output Resistance	$350\ \Omega \pm 0.5\%$
Cable	4-conductor (0.3 mm ²) chloroprene shielded cable, 7.6 mm dia. by 5 m long, terminated with an NDIS connector plug (Shield wire is not connected to the mainframe.)
Mechanical Properties	
Safe Overload Rating	400%
Natural Frequency	See table below.
Weight	See table below.
Protection Rating	IP 67 (Watertight type conforming to JIS C 0920)

Dimensions



Model	Rated Capacity	Nat. Freq. (App.)	A	B	C	ϕD	ϕE	ϕF	G	H	R	Weight (App.)	Saddle
LC-500KJ	5 kN	5.2 kHz	103	90	13	100	80	24	60	77	50	3.6 kg	CA-1C
LC-1TJ	10 kN	6 kHz	103	90	13	100	80	24	60	77	70		CA-10C
LC-2TJ	20 kN	5.8 kHz											
LC-5TJ	50 kN	5.7 kHz											
LC-10TJ	100 kN	5.5 kHz	110	95	15	120	90	36	60	90	100	5.6 kg	
LC-20TJ	200 kN	6 kHz	135	115	20	120	90	46	80	90	130	6.6 kg	

Dimensions with Accessories Mounted



• In Combination with Movable Saddle ER and Mount Base CF

Load Cell Proper ①	Movable Saddle ②	Mount Base ③	Hexagon Socket Head Cap Screw ④	A	ϕB	ϕC	ϕD	ϕE	ϕF	ϕG	ϕH	J	L	M	N
LC-500KJ	ER-1D	CF-80C	M8 L=25	182	100	138	148	118	124	100	80	M12	103	40	40
LC-1TJ	ER-5D	CF-80C	M8 L=25	192	100	148	148	128	124	100	80	M12	103	40	50
LC-2TJ				202	100	178	148	158	124	100	80	M12	103	40	60
LC-5TJ	ER-10D	CF-80C	M8 L=25	238	120	198	168	178	144	120	90	M12	110	50	80
LC-10TJ	ER-20D	CF-90C	M8 L=30	—	120	—	168	—	144	120	90	—	135	50	—
LC-20TJ	—	CF-90C	M8 L=35	—	—	—	—	—	—	—	—	—	—	—	—

Hexagon socket head cap screw is attached to the mount base for its connection to the load cell.