

# High/Low Temp. Tension Load Cells

FH: -10 to 150°C  
FL: -196 to 30°C

LT-FH/FL

500 N to 200 kN

Wide Range of Rated Capacities

Mechanical Stopper which activates against 500% overload

High Reliability

Airtight Structure



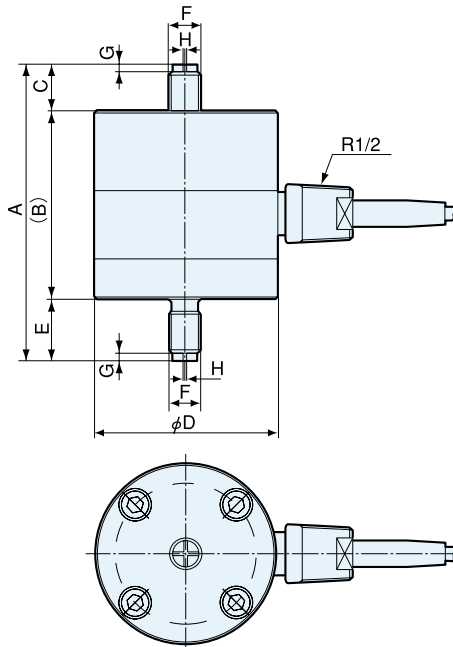
• TEDS-installed versions can be manufactured. Inquiries are welcome.

LT-FH series enables continuous operation under temperatures as high as 150°C with no external cooling. LT-FL series enables operation under ultra-low temperature ranging from -196°C.

## Specifications

Performance	
Rated Capacity	See table below.
Nonlinearity	Within ±0.5% RO
Hysteresis	Within ±0.5% RO
Repeatability	0.05% RO or less
Rated Output	1.5 mV/V (3000 µm/m) ±0.2%
Environmental Capability	
Safe Temp. Range	FH -10 to 150°C
	FL -200 to 80°C
Comp. Temp. Range	FH -10 to 150°C
	FL -196 to 30°C
Temp. Effect on Zero Bal.	Within ±0.005% RO/°C
Temp. Effect on Out.	Within ±0.01%/°C
Electrical Characteristics	
Safe Excit. Voltage	20 V AC or DC
Recom. Excit. Voltage	1 to 10 V AC or DC
Input Resistance	350 Ω ±0.5%
Output Resistance	350 Ω ±0.5%
Cable	4-conductor (0,3 mm <sup>2</sup> ) fluoroplastic shielded cable, 5 mm dia. by 5 m long, terminated with NDIS connector plug (Shield wire is not connected to the mainframe.)
Mechanical Properties	
Safe Overload Rating	200%
Critical Overload Rating	500%
Natural Frequency	See table below.
Weight	See table below.
Protection Rating	IP 52

## Dimensions



- For special accessories to tension load cells such as rotating attachments, ball joints, hooks and shackles, refer to pages 79 and 80.
- Use these special accessories pre-attached to load cells at our factory.

High Temp.	Low Temp.	Rated Capacity	Natural Frequency (App.)	A	B	C	φ D	E	F	G	H	Weight (App)
LT-50KFH	LT-50KFL	500 N	1.5 kHz	111	71	17	68	23	M12 P=1.75	3	1.6	2.3 kg
LT-100KFH	LT-100KFL	1 kN	2.6 kHz									
LT-200KFH	LT-200KFL	2 kN	4.1 Hz									
LT-500KFH	LT-500KFL	5 kN	5.0 kHz	129	82	20	68	27	M14 P=2	5	3	2.6 kg
LT-1TFH	LT-1TFL	10 kN	5.2 kHz	143	84	26	68	33	M18 P=1.5	5	3	2.7 kg
LT-2TFH	LT-2TFL	20 kN	5.8 kHz	168	89	35	68	44	M24 P=2	5	3	2.9 kg
LT-5TFH	LT-5TFL	50 kN	4.5 kHz	236	126	55	96	55	M39 P=3	6	6	7.0 kg
LT-10TFH	LT-10TFL	100 kN	3.3 kHz	317	167	75	135	75	M56 P=3	6	6	19 kg
LT-20TFH	LT-20TFL	200 kN	2.4 kHz	421	221	100	185	100	M76 P=4	8	8	45 kg